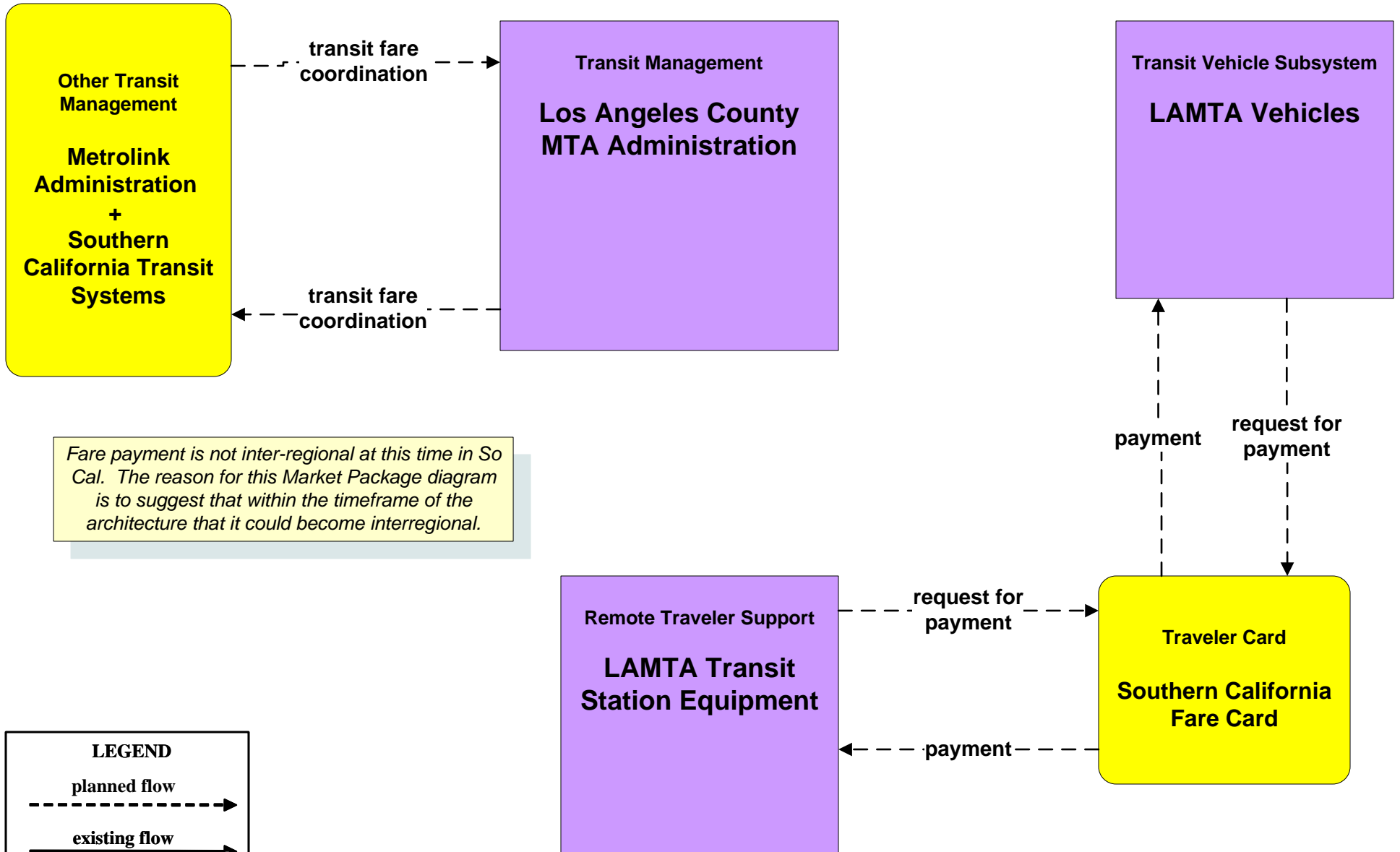
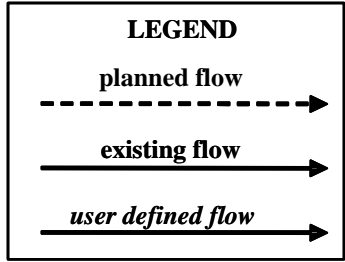


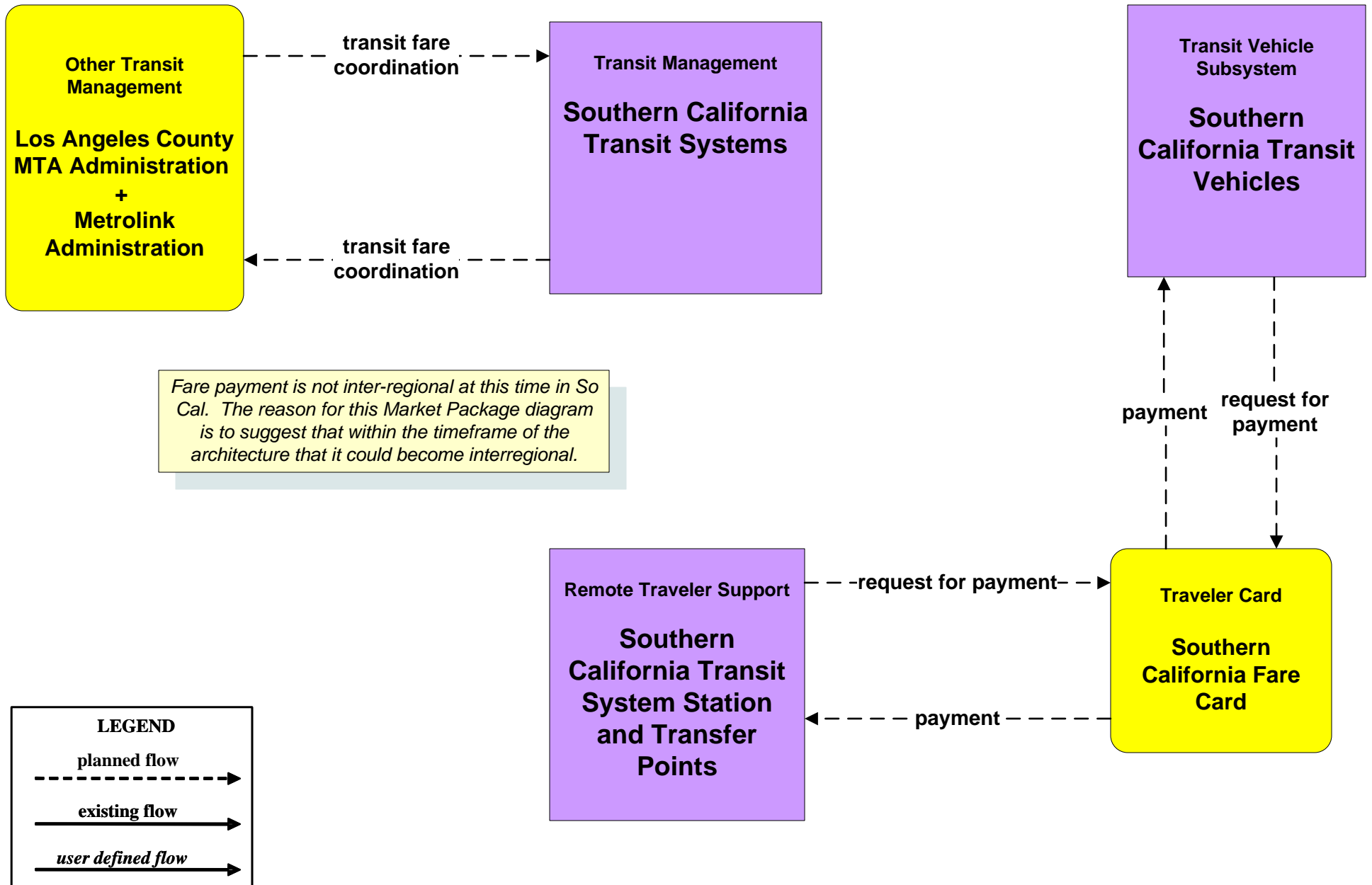
APTS4 - Transit Passenger and Fare Payment Los Angeles County MTA



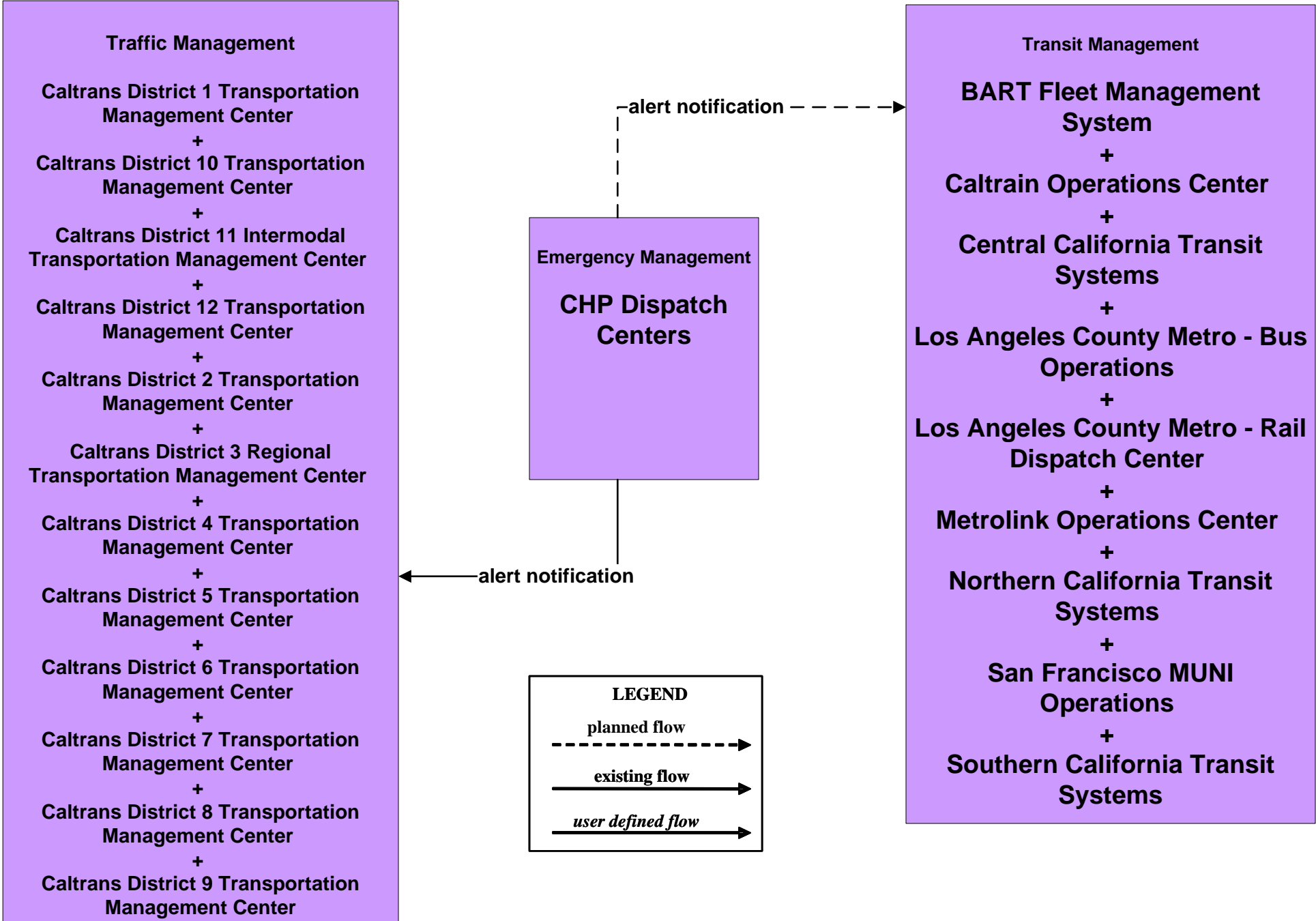
Fare payment is not inter-regional at this time in So Cal. The reason for this Market Package diagram is to suggest that within the timeframe of the architecture that it could become interregional.



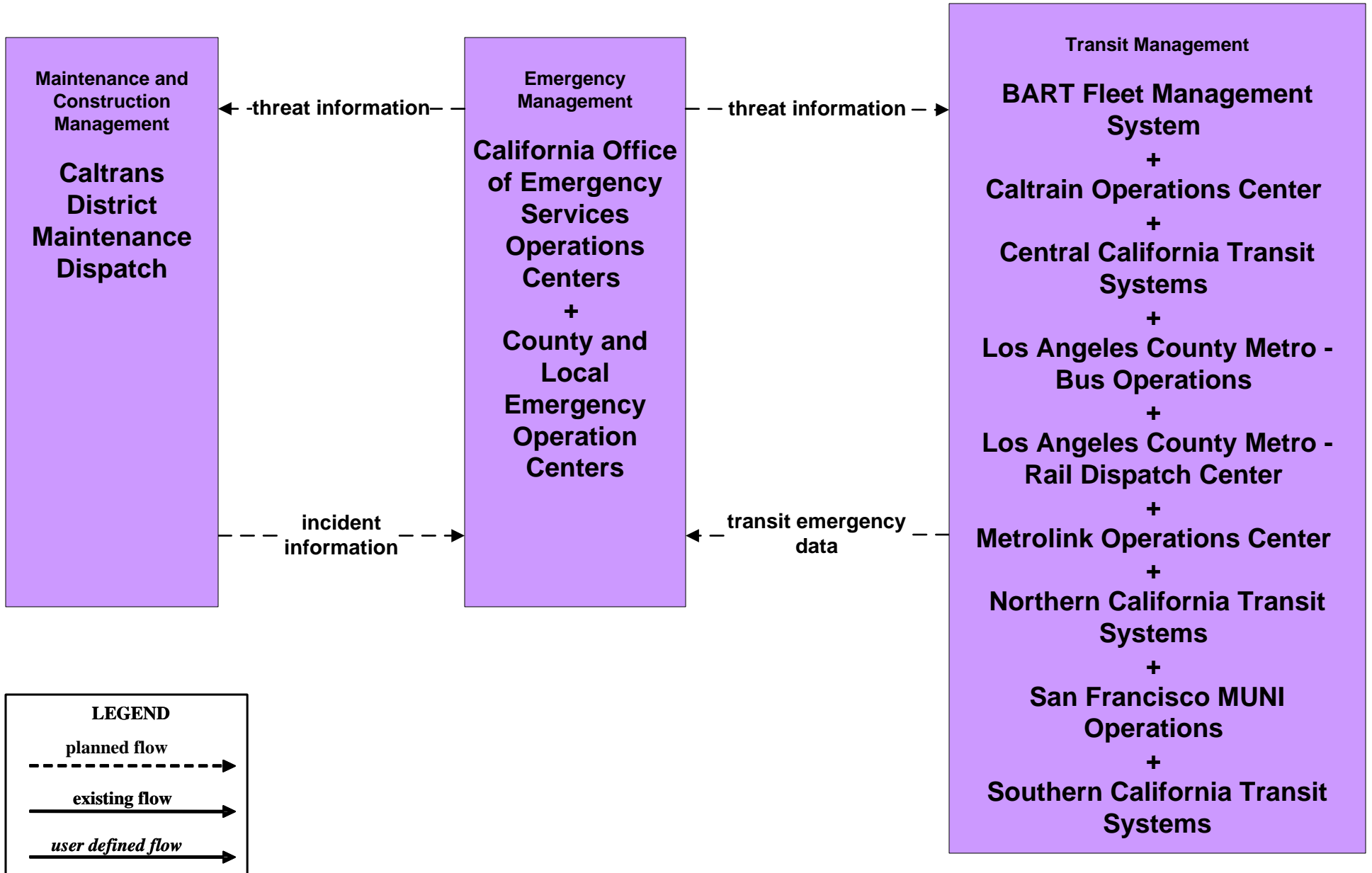
APTS4 - Transit Passenger and Fare Payment Southern California Transit Systems



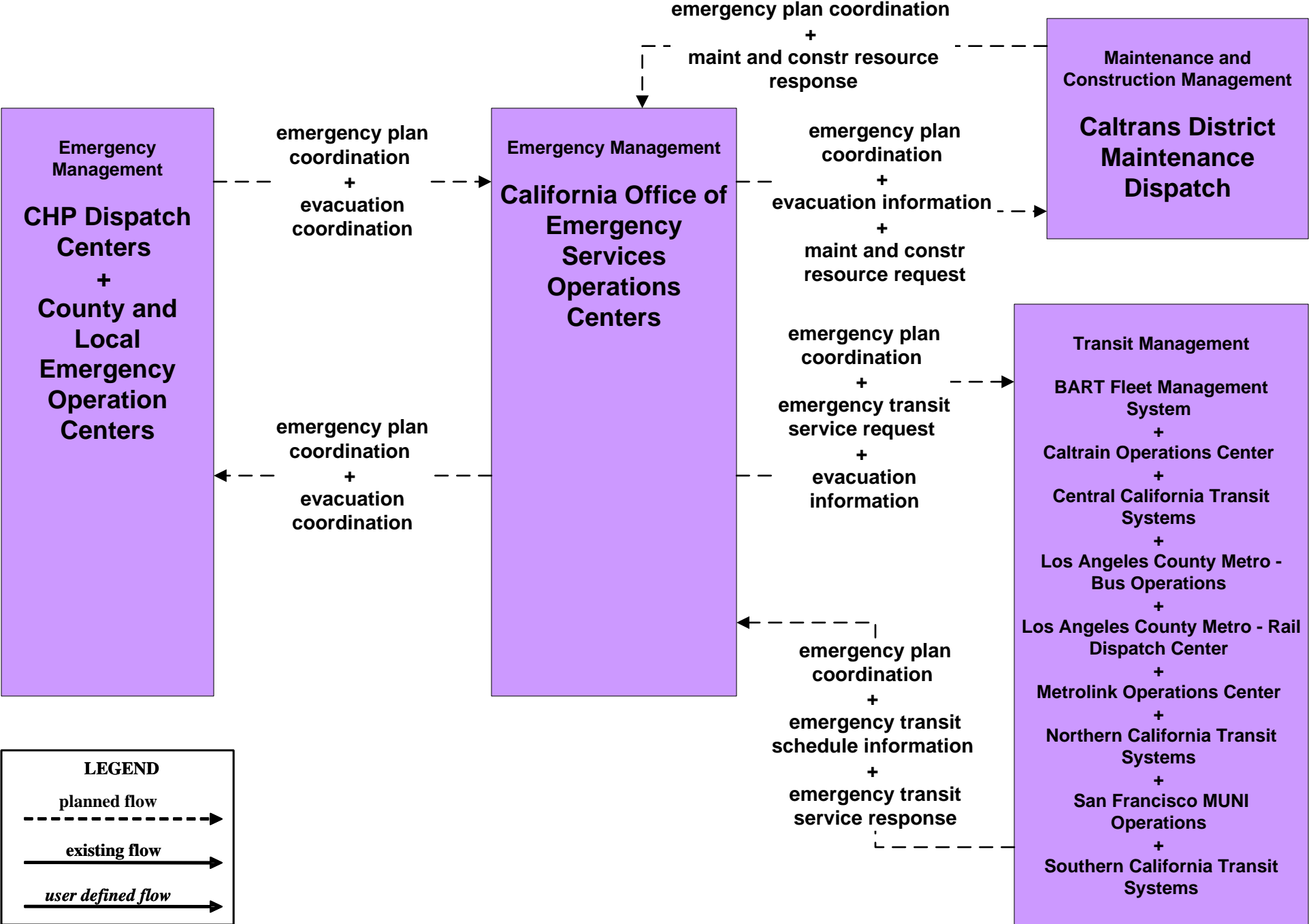
**EM06 - Wide-Area Alert
CHP Dispatch Centers**



EM07 - Early Warning System



EM09 - Evacuation
Evacuations - California Statewide EOC



EM09 - Evacuation
Evacuations - County and Local EOCs (2 of 2)

